

Activity Name	Original Duration	Planned Start	Planned Finish	2011				2012				2013				2014				2015				2016	
				Q3	Q4	Q1	Q2	Q3	Q4	Q1	Q2	Q3	Q4	Q1	Q2	Q3	Q4	Q1	Q2	Q3	Q4	Q1	Q2		
HY/2009/15 - CWB TUNNEL (CBTS SECTION)																									
SUBMISSIONS COMPLYING WITH EPs																									
EM&A Manual (rely on the Master EP's submission EP-364/2009/A Condition 2.9)																									
Baseline Monitoring Report (rely on the Master EP's submission EP-364/2009 Condition 3.3)																									
Monthly EM&A (rely on the masters EP's Submission, EP-364/2009/A Condition 3.4)																									
A dedicated website (rely on the master EP's submission, EP-364/2009/A Condition 4.2)																									
Management organization of main construction companies (FEP Condition 2.6)	1d	02-Oct-10	02-Oct-10																						
Work Schedule (FEP Condition 2.7)	1d	27-Oct-10	27-Oct-10																						
Location Plan (FEP Condition 2.8)	1d	27-Oct-10	27-Oct-10																						
Noise Management plan (FEP Condition 2.9)	1d	27-Oct-10	27-Oct-10																						
Landscape plan (FEP condition 2.10)	1d	31-Jan-11	31-Jan-11																						
EAST VENTILATION ADIT																									
CCT @ Portion 1, 2, 4, 6, 22	1315d	27-Sep-10	03-May-14																						
EV Adit @ Portion 4-Advance Works	526d	27-Sep-10	05-Mar-12																						
EV Adit Portion 1, 2, 6, 22	26d	22-Dec-11	16-Jan-12																						
EV Adit-based on Conforming Design	323d	15-Feb-12	02-Jan-13																						
TCBR1E (TS1 Area)																									
Diaphragm Wall Construction (incl. SI, & tests after completion)	107d	26-Apr-11	10-Aug-11																						
Excavation & Lateral Support, ELS	99d	16-Jul-11	22-Oct-11																						
Cut & Cover Tunnel Construction (incl. backfill)	78d	22-Oct-11	07-Jan-12																						
OHVD and Cable Trough (access from Portion 22)	76d	18-Dec-13	03-Mar-14																						
TCBR2 + TCBR3 (TS2 Area)																									
Diaphragm Wall Construction	118d	06-Jul-12	31-Oct-12																						
Excavation & Lateral Support, ELS	248d	06-Jul-12	10-Mar-13																						
Cut & Cover Tunnel Construction	164d	11-Mar-13	21-Aug-13																						
OHVD Cable Trough (Access from Portion 22)	150d	05-Aug-13	01-Jan-14																						
TCBR1W (TS4 Area)																									
Diaphragm Wall Construction	148d	28-Jun-11	22-Nov-11																						
Excavation & Lateral Support, ELS	319d	26-Jun-11	11-May-12																						
Landing Steps - Demolition/Reconstruct as footpath	40d	28-Jun-11	23-Aug-11																						

- ◆ Milestone
- ◆ Milestone
- ▨ Remaining Work
- ▨ Critical Remaining Work
- ▨ Actual Work

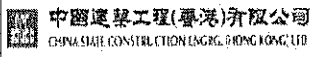
1 of 2

China State Construction Engineering (Hong Kong) Ltd.

Contract No. HY/2009/15 - Central Wan Chai By Pass - Tunnel

(CBTS Section)

Prepared by William Caluza			
Date	Revision	Checked	Approved
14-Mar-11	Revision C	ST	KL
	File: GC01a		
	(Layout:HY/2009/15: CWB - Summary)		



Activity Name	Original Duration	Planned Start	Planned Finish	2011					2012				2013				2014				2015				2016	
				Q3	Q4	Q1	Q2	Q3	Q4	Q1	Q2	Q3	Q4	Q1	Q2	Q3	Q4	Q1	Q2	Q3	Q4	Q1	Q2	Q3	Q4	Q1
Rock Excavation	235d	25-Apr-12	15-Dec-12																							
ME4-Diaphragm Wall	114d	10-May-12	19-Oct-12																							
AS Logistics Area for Mined Tunneling Works	174d	01-Jun-12	07-Feb-13																							
ME4-ELS Works	212d	01-Jun-12	02-Apr-13																							
SCL Entrusted Works	291d	18-Jul-12	08-Sep-13																							
Cut & Cover Tunnel Construction (w/o TS4 +)	111d	17-Dec-12	06-Apr-13																							
ME4-RC Structure	146d	28-Jan-13	21-Aug-13																							
OHVD and Cable Trough (Access from TZ5/TPCWAE/TPCWAW)	180d	17-Jun-13	13-Dec-13																							
MINED TUNNEL																										
CHT Protection Works @ location A, B, C	342d	27-Sep-10	01-Feb-12																							
Tunnel works from West Portal (access from TPCWAE& TZ5	418d	12-Mar-12	30-Oct-13																							
Tunnel Works from East Portal (Access from TS4 Area)	214d	30-Mar-12	01-Feb-13																							
Tunnel OHVD & Cable Trough	384d	02-Dec-13	22-May-15																							
TPCWAE																										
Drainage Diversion works along Hung Hing Road (Portion 19)	176d	15-Oct-10	24-Jun-11																							
Diaphragm Wall Construction	147d	20-May-11	13-Oct-11																							
Excavation & Lateral Support, ELS	421d	20-May-11	13-Jul-12																							
Rock Excavation	208d	12-Mar-12	03-Oct-12																							
AS Logistics Area for Mined Tunneling works	342d	12-May-12	18-Apr-13																							
Cut & Cover Tunnel Construction	130d	28-Jan-13	06-Jun-13																							
OHVD and Cable Trough (Access from TZ5/TPCWAW)	182d	18-Feb-15	18-Aug-15																							
TPCWAW & PORTION 11																										
Diaphragm Wall Construction + Portion 11	222d	25-Oct-13	03-Jun-14																							
Excavation & Lateral Support, ELS	478d	25-Oct-13	14-Feb-15																							
Cut & Cover Tunnel Construction	143d	30-Dec-14	21-May-15																							
OHVD and Cable Trough Installation (Access from Portion 11)	235d	22-May-15	11-Jan-16																							

- ◆ Milestone
- ◆ Milestone
- ▬ Remaining Work
- ▬ Critical Remaining Work
- ▬ Actual Work

2 of 2

China State Construction Engineering (Hong Kong) Ltd.
Contract No. HY/2009/15 - Central Wan Chai By Pass - Tunnel
(CBTS Section)

Prepared by William Caluza			
Date	Revision	Checked	Approved
14-Mar-11	Revision C	ST	KL
	File: 0001a		
	(Layout: HY/2009/15: CWB - Summary)		



HY/2009/18 Central - Wan Chai Bypass (Central Interchange)



TASK filters: 3 Months, Not HL.

Activity ID	Activity Name	Original Durati...	Start	Finish	Total Float	2012			
						Apr	May	Jun	Jul

Updated 2012-04-20 CWB - Central Interchange (2011-12-23) Revised Detailed Wo...

PRELIMINARIES

Access Dates & Milestones

Portion Possession Dates

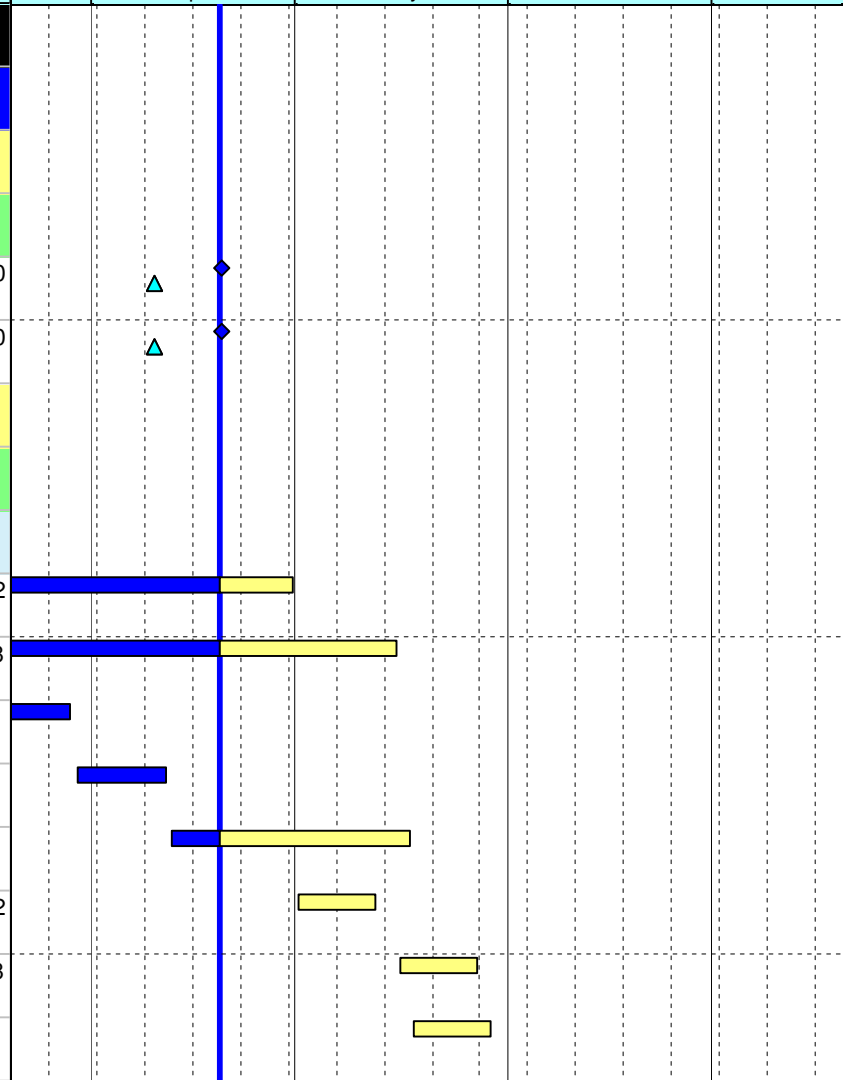
1285	Portion III B Available (DAY-567)	0	20-Apr-12*		-10				
1295	Portion III C Available (DAY-567)	0	20-Apr-12*		-10				

Submissions & Approvals

Specified Plans

MTRC Impact Assessment Report

1558	Resubmit MTRC Impact Assessment Report - Cut & CoverTunnel	28	17-Feb-12 A	30-Apr-12	92				
1501	Resubmit MTRC Impact Assessment Report - Phase 2	12	19-Feb-12 A	15-May-12	138				
1371	Resubmit MTRC Impact Assessment Report - MYS Tunnel	28	25-Feb-12 A	29-Mar-12 A					
1534	MTRC Impact Assessment Report - Engineer / MTRC Review & Comment	12	30-Mar-12 A	12-Apr-12 A					
1535	Resubmit MTRC Impact Assessment Report - MYS Tunnel	28	13-Apr-12 A	17-May-12	121				
1559	MTRC Impact Assessment Report - Engineer / MTRC Review & Comment (Cut & Cover)	12	01-May-12	12-May-12	92				
1504	MTRC Impact Assessment Report - Engineer / MTRC Review & Comment (Phase 2)	12	16-May-12	27-May-12	138				
1553	MTRC Impact Assessment Report - Engineer / MTRC Review & Comment (MYS)	12	18-May-12	29-May-12	121				



- Current Milestone
- Critical Remaining Work
- Level of Effort
- Remaining Work
- Baseline Milestone
- Project Baseline
- Actual Work

Leighton Contractors (Asia) Limited Programme Update 19 (Apr 2012) THREE MONTH ROLLING

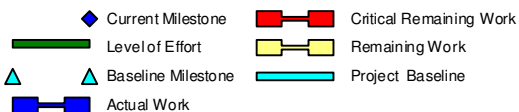
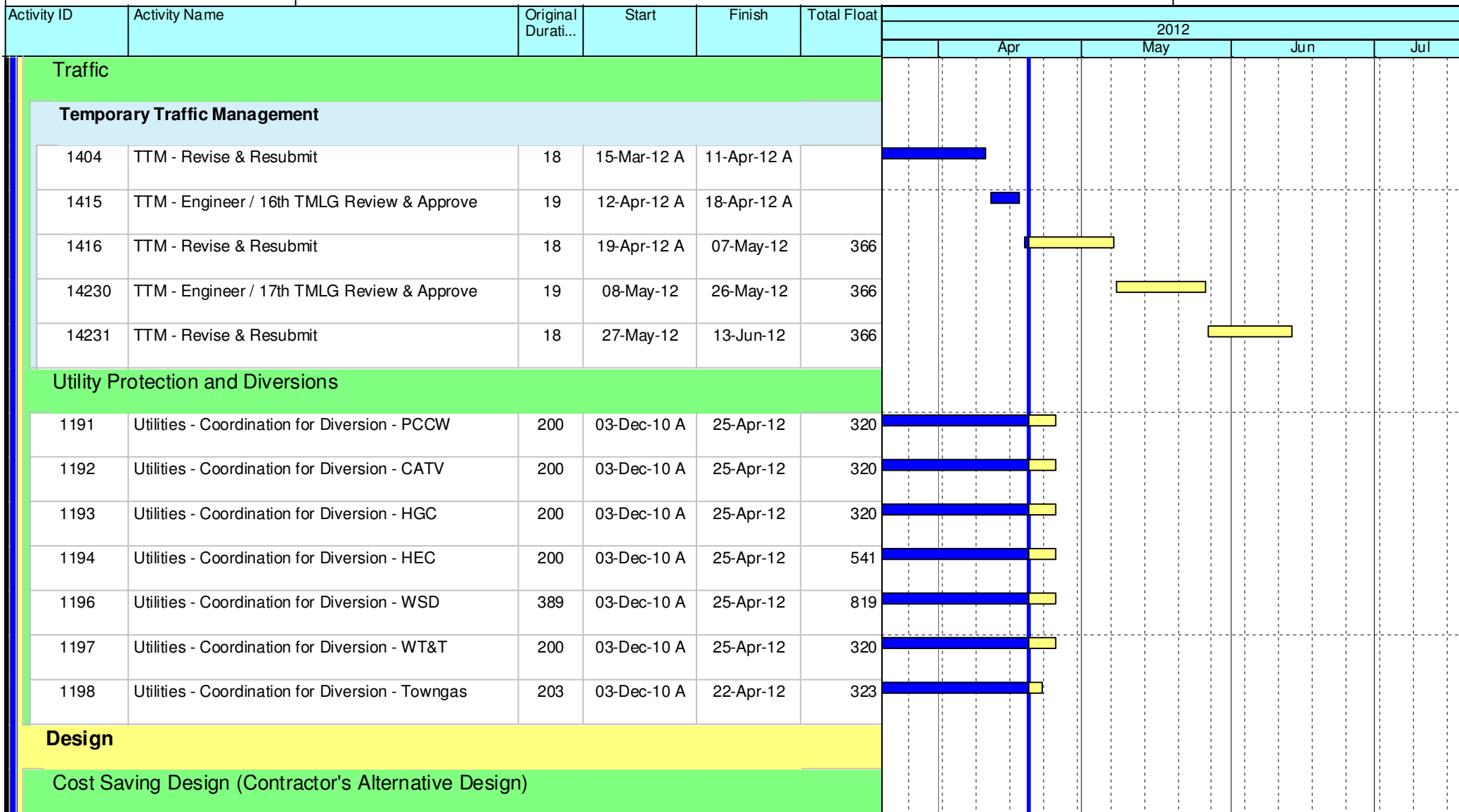
Project ID: U019
 Baseline: DCP3-3
 Layout: Update Three Month Rolling U018
 Page 1 of 12

U019 Programme Update 19 (Apr 2012)			
Date	Revision	Checked	Approv...
21-Apr-12	U019	RC	DS
21-Mar-12	U018	RC	DS

HY/2009/18 Central - Wan Chai Bypass (Central Interchange)



TASK filters: 3 Months, Not HL.



Leighton Contractors (Asia) Limited Programme Update 19 (Apr 2012) THREE MONTH ROLLING

Project ID: U019
 Baseline: DCP3-3
 Layout: Update Three Month Rolling U018
 Page 2 of 12

U019 Programme Update 19 (Apr 2012)			
Date	Revision	Checked	Approv...
21-Apr-12	U019	RC	DS
21-Mar-12	U018	RC	DS

HY/2009/18 Central - Wan Chai Bypass (Central Interchange)



TASK filters: 3 Months, Not HL.

Activity ID	Activity Name	Original Durati...	Start	Finish	Total Float	2012				
						Apr	May	Jun	Jul	
ELS - CWB Man Yiu Street Portion & Tunnel Modification Works (CH1646 - CH1685)										
3932	ELS - ELS CWB Man Yiu Street Portion Design Resubmission	15	25-Feb-12 A	29-Mar-12 A						
1593	ELS - ELS CWB Man Yiu Street Portion Method Statement Resubmission	28	14-Mar-12 A	17-May-12	105					
3933	ELS - ELS CWB Man Yiu Street Portion Engineer Review & Approve	28	30-Mar-12 A	12-Apr-12 A						
1581	ELS - ELS CWB Man Yiu Street Portion Design Resubmission	15	13-Apr-12 A	04-May-12	28					
1582	ELS - ELS CWB Man Yiu Street Portion Engineer Review & Approve	28	05-May-12	01-Jun-12	28					
1595	ELS - ELS CWB Man Yiu Street Portion Engineer Review & Approve	28	18-May-12	14-Jun-12	105					
ELS - CWB Cut & Cover Portion (CH1580 - CH1646)										
1497	ELS - ELS CWB CH1580-CH1646 Portion Re-submit Design	15	17-Feb-12 A	30-Apr-12	17					
3937	ELS - ELS CWB CH1580-CH1646 Portion Prepare Method Statement	15	01-May-12	15-May-12	17					
1496	ELS - ELS CWB CH1580-CH1646 Portion Re-submit Design Engineer Review & Comment	12	01-May-12	12-May-12	48					
3939	ELS - ELS CWB CH1580-CH1646 Portion Method Statement Engineer Review & Approval	28	16-May-12	12-Jun-12	17					
ELS - CWB CRIII Portion (CH1685 - CH1704)										
1604	ELS - ELS CRIII Portion Resubmit Design	28	25-Feb-12 A	29-Mar-12 A						
1605	ELS - ELS CRIII Portion Engineer Review & Approve	28	30-Mar-12 A	12-Apr-12 A						
1606	ELS - ELS CRIII Portion Resubmit Design	28	12-Apr-12 A	04-May-12	471					
3943	ELS - ELS CRIII Portion Prepare Method Statement	15	20-Apr-12	04-May-12	471					

- ◆ Current Milestone
- Critical Remaining Work
- ▬ Level of Effort
- ▬ Remaining Work
- ▲ Baseline Milestone
- ▬ Project Baseline
- ▬ Actual Work

Leighton Contractors (Asia) Limited Programme Update 19 (Apr 2012) THREE MONTH ROLLING

Project ID: U019
 Baseline: DCP3-3
 Layout: Update Three Month Rolling U018
 Page 4 of 12

U019 Programme Update 19 (Apr 2012)			
Date	Revision	Checked	Approv...
21-Apr-12	U019	RC	DS
21-Mar-12	U018	RC	DS

HY/2009/18 Central - Wan Chai Bypass (Central Interchange)



TASK filters: 3 Months, Not HL.

Activity ID	Activity Name	Original Durati...	Start	Finish	Total Float	2012			
						Apr	May	Jun	Jul
3945	ELS - ELS CRIII Portion Engineer Review & Approve	28	05-May-12	01-Jun-12	471	[Gantt bar: Apr to May]			
1607	ELS - ELS CRIII Portion Engineer Review & Approve	28	05-May-12	01-Jun-12	471	[Gantt bar: May to Jun]			
ELS - Retaining Wall									
1169	ELS - ELS Retaining Wall VI Portion Prepare Design	52	22-May-12	12-Jul-12	499	[Gantt bar: May to Jul]			
1170	ELS - ELS Retaining Wall VI Portion Prepare Method Statement	15	15-Jul-12	29-Jul-12	499	[Gantt bar: Jul]			
Procurement, Shop Drawing, Manufacture & Delivery									
Excavation & Lateral Support									
1126	ELS - Wailing & Shoring Material Sourcing, Procurement and Delivery (Man Yiu St.)	60	30-Jun-12	28-Aug-12	0	[Gantt bar: Jun to Aug]			
1172	ELS - Wailing & Shoring Material Sourcing, Procurement and Delivery (Retaining Wall)	60	13-Jul-12	10-Sep-12	499	[Gantt bar: Jul to Sep]			
Cut & Cover Tunnel									
3812	Falsework and Formwork for Cut & Cover Tunnel Shop Drawing	28	20-Apr-12	17-May-12	4	[Gantt bar: Apr to May]			
3814	Falsework and Formwork for Cut & Cover Tunnel Material Procurment	28	18-May-12	14-Jun-12	4	[Gantt bar: May to Jun]			
3810	Falsework and Formwork for Cut & Cover Tunnel Off-site Fabrication	60	15-Jun-12	13-Aug-12	4	[Gantt bar: Jun to Aug]			
Overhead Ventilation Duct									
3811	OHVD - Propose Casting Yard, Method Statement, QA & Associated Documents	30	16-Apr-12 A	29-May-12	45	[Gantt bar: Apr to May]			
3813	OHVD - Engineer Review & Approve Casting Yard, Method Statement, QA & Associated Documents	30	30-May-12	28-Jun-12	45	[Gantt bar: May to Jun]			
3815	OHVD - Manufacture and Initial Delivery Precast Panels	60	29-Jun-12	27-Aug-12	45	[Gantt bar: Jun to Aug]			

- ◆ Current Milestone
- Critical Remaining Work
- ▬ Level of Effort
- ▬ Remaining Work
- ▲ Baseline Milestone
- ▬ Project Baseline
- ▬ Actual Work

Leighton Contractors (Asia) Limited Programme Update 19 (Apr 2012) THREE MONTH ROLLING

Project ID: U019
 Baseline: DCP3-3
 Layout: Update Three Month Rolling U018
 Page 5 of 12

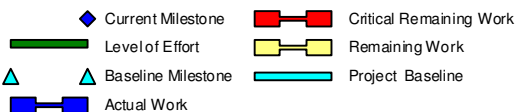
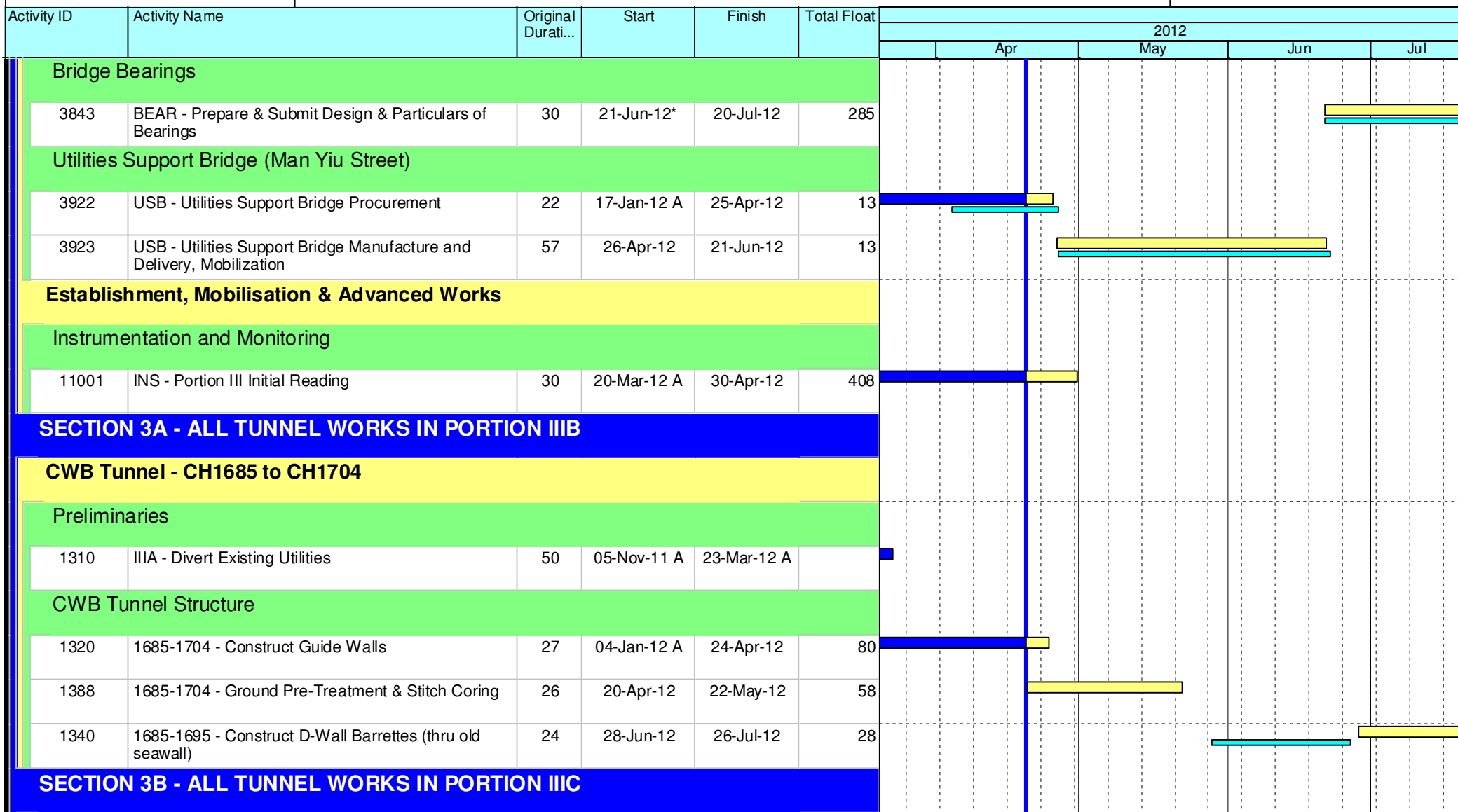
U019 Programme Update 19 (Apr 2012)			
Date	Revision	Checked	Approv...
21-Apr-12	U019	RC	DS
21-Mar-12	U018	RC	DS

Data Date: 20-Apr-12
 Print Date: 25-Apr-12

HY/2009/18 Central - Wan Chai Bypass (Central Interchange)



TASK filters: 3 Months, Not HL.



Leighton Contractors (Asia) Limited Programme Update 19 (Apr 2012) THREE MONTH ROLLING

Project ID: U019
 Baseline: DCP3-3
 Layout: Update Three Month Rolling U018
 Page 6 of 12

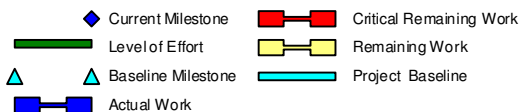
U019 Programme Update 19 (Apr 2012)			
Date	Revision	Checked	Approv...
21-Apr-12	U019	RC	DS
21-Mar-12	U018	RC	DS

HY/2009/18 Central - Wan Chai Bypass (Central Interchange)



TASK filters: 3 Months, Not HL.

Activity ID	Activity Name	Original Durati...	Start	Finish	Total Float	2012				
						Apr	May	Jun	Jul	
CWB Tunnel - CH1825 to CH2600										
CWB Tunnel Internal Works										
1368	1825-2600 - Access Available via Roof Opening at CH1700	0		20-Apr-12	38					
1370	2213-2600 - Construct Insitu Roof Kickers	78	20-Apr-12	24-Jul-12	38					
SECTION 4B - ALL TUNNEL WORKS IN PORTION IVC, IVD, IVE & IVF										
CWB Tunnel - CH1480 to CH1580										
Preliminaries										
1379	IVC - Temp. Divert Finance St.	12	20-Apr-12	05-May-12	51					
1346	IVC - Reinstate Drainage along Finance Street (Stage 2)	26	07-May-12	05-Jun-12	51					
1352	IVC - Reinstate Finance Street (Stage2 Area)	12	06-Jun-12	19-Jun-12	51					
CWB Tunnel Structure										
11006	1480-1580 - Construct D-Wall / Barrettes (Exclude W2D11)	74	27-Sep-11 A	20-Mar-12 A						
1571	1480-1580 - Sonic Test, Interface Core Test & Full Core Test	24	02-Dec-11 A	24-Apr-12	15					
1409	1480-1580 - Construct D-Wall (W2D11)	10	05-Mar-12 A	20-Mar-12 A						
1468	1480-1580 - Construct D-Wall (W2D18)	10	07-Mar-12 A	20-Mar-12 A						
1411	1480-1580 - Slurry Wall (Ch1480)	15	08-Mar-12 A	30-Mar-12 A						
1491	1480-1580 - Installation of Pump Well	24	09-Mar-12 A	20-Apr-12 A						



Leighton Contractors (Asia) Limited Programme Update 19 (Apr 2012) THREE MONTH ROLLING

Project ID: U019
 Baseline: DCP3-3
 Layout: Update Three Month Rolling U018
 Page 7 of 12

U019 Programme Update 19 (Apr 2012)			
Date	Revision	Checked	Approv...
21-Apr-12	U019	RC	DS
21-Mar-12	U018	RC	DS

HY/2009/18 Central - Wan Chai Bypass (Central Interchange)



TASK filters: 3 Months, Not HL.

Activity ID	Activity Name	Original Durati...	Start	Finish	Total Float	2012				
						Apr	May	Jun	Jul	
1408	1480-1580 - Construct D-Wall (W2D8)	11	17-Mar-12 A	31-Mar-12 A						
1575	1480-1580 - Slurry Wall (Ch1580)	14	10-Apr-12 A	23-Apr-12	4					
1347	1480-1580 - Excavate for Top Slabs	18	18-Apr-12 A	08-May-12	5					
1572	1480-1580 - Pump Test	12	24-Apr-12	09-May-12	4					
1349	1480-1580 - Construct Top Slabs	24	09-May-12	05-Jun-12	5					
1580	1480-1580 - Excavate & Lateral Support to Bottom of CWB Tunnel(1480-1600)	100	10-May-12	05-Sep-12	4					
11300	1480-1580 - Excavate 1st Layer	36	10-May-12	20-Jun-12	4					
11320	1480-1580 - Erect 1st Layer Support	33	30-May-12	09-Jul-12	4					
1517	1480-1580 - Excavate 2nd Layer	15	10-Jul-12	26-Jul-12	4					
1519	1480-1580 - Erect 2nd Layer Support	15	17-Jul-12	02-Aug-12	4					

SECTION 4A - ALL TUNNEL WORKS IN PORTION IVA, IVB, IVG & IVH

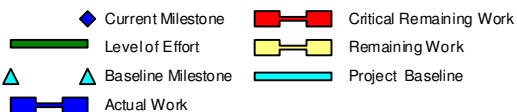
CWB Tunnel - CH1580 to CH1646

Preliminaries

1657	IVA & IVG - Divert Existing Utilities WSD, HGC	26	03-Apr-12 A	10-Apr-12 A						
1566	IVA & IVG - Divert Existing Utilities HEC (Changeover)	29	20-Apr-12	25-May-12	0					

CWB Tunnel Structure

1663	1580-1646 - Pre-drilling (Site Investigation) W1D20 - W1D30, BC12 - BC15	30	30-Jul-11 A	30-Mar-12 A						
------	--	----	-------------	-------------	--	--	--	--	--	--



Leighton Contractors (Asia) Limited Programme Update 19 (Apr 2012) THREE MONTH ROLLING

Project ID: U019
 Baseline: DCP3-3
 Layout: Update Three Month Rolling U018
 Page 8 of 12

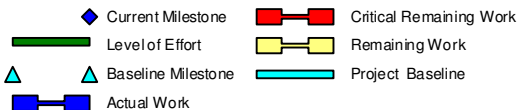
U019 Programme Update 19 (Apr 2012)			
Date	Revision	Checked	Approv...
21-Apr-12	U019	RC	DS
21-Mar-12	U018	RC	DS

HY/2009/18 Central - Wan Chai Bypass (Central Interchange)



TASK filters: 3 Months, Not HL.

Activity ID	Activity Name	Original Durati...	Start	Finish	Total Float	2012				
						Apr	May	Jun	Jul	
1664	1580-1646 - Construct Guide Walls W1D20 - W1D30, BC12 - BC15	48	30-Jul-11 A	24-Apr-12	29					
1341	1580-1646 - Construct Guide Walls (W2D20 - W2D30) Exclude W2D28	18	12-Dec-11 A	24-Apr-12	41					
1665	1580 - 1646 - Construct D-Wall / Barrettes 1600 - 1646	46	09-Jan-12 A	13-Jun-12	0					
1387	1580 - 1646 - Construct Utilities Bridges	26	08-Mar-12 A	02-Apr-12 A						
1482	1580 - 1646 - Construct D-Wall (W1D24)	5	19-Mar-12 A	24-Mar-12 A						
1487	1580 - 1646 - Construct D-Wall (W2D23)	12	20-Mar-12 A	03-Apr-12 A						
1485	1580 - 1646 - Construct D-Wall (W2D20)	6	22-Mar-12 A	28-Mar-12 A						
1483	1580 - 1646 - Construct D-Wall (W1D23)	14	27-Mar-12 A	19-Apr-12 A						
1488	1580 - 1646 - Construct D-Wall (W2D19)	6	29-Mar-12 A	05-Apr-12 A						
1509	1580 - 1646 - Construct D-Wall (BC13)	16	29-Mar-12 A	05-May-12	1					
1511	1580 - 1646 - Construct D-Wall (BC12)	16	11-Apr-12 A	27-Apr-12	6					
1515	1580 - 1646 - Construct D-Wall (BC11)	14	30-Apr-12	16-May-12	24					
1513	1580 - 1646 - Construct D-Wall (BC14)	12	07-May-12	19-May-12	1					
1666	1580-1646 - Slurry Wall	24	16-May-12	12-Jun-12	1					
1567	1580 - 1646 - Construct D-Wall (W1D30)	8	26-May-12	04-Jun-12	0					
1568	1580 - 1646 - Construct D-Wall (W1D28)	8	29-May-12	06-Jun-12	0					
1569	1580 - 1646 - Construct D-Wall (W1D29)	8	31-May-12	08-Jun-12	0					



Leighton Contractors (Asia) Limited Programme Update 19 (Apr 2012) THREE MONTH ROLLING

Project ID: U019
 Baseline: DCP3-3
 Layout: Update Three Month Rolling U018
 Page 9 of 12

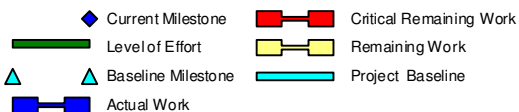
U019 Programme Update 19 (Apr 2012)			
Date	Revision	Checked	Approv...
21-Apr-12	U019	RC	DS
21-Mar-12	U018	RC	DS

HY/2009/18 Central - Wan Chai Bypass (Central Interchange)



TASK filters: 3 Months, Not HL.

Activity ID	Activity Name	Original Durati...	Start	Finish	Total Float	2012					
						Apr	May	Jun	Jul		
1573	1580 - 1646 - Construct D-Wall (W2D30)	8	02-Jun-12	11-Jun-12	77						
1574	1580 - 1646 - Construct D-Wall (W2D29)	8	05-Jun-12	13-Jun-12	77						
1667	1580-1646 - Sonic Test, Interface Core Test & Full Core Test	24	14-Jun-12	13-Jul-12	25						
1668	1580-1646 - Pump Test	12	14-Jun-12	28-Jun-12	1						
1391	1580-1646 - Excavate Top Slab	18	29-Jun-12	20-Jul-12	1						
CWB Tunnel - CH1646 to CH1685											
CWB Tunnel Structure											
2540	1646-1685 - Pre-drilling (Site Investigation)	25	15-Dec-11 A	23-Apr-12	9						
2550	1646-1685 - Construct Guide Walls	25	20-Apr-12	21-May-12	4						
1389	1646-1685 - Ground Treatment	12	24-Apr-12	09-May-12	14						
2560	1646-1685 - Construct Barrettes BC16-BC18, BC21, BC22	27	26-May-12	27-Jun-12	0						
1561	1646-1685 - Construct Barrettes BC21	12	26-May-12	08-Jun-12	0						
1562	1646-1685 - Construct Barrettes BC22	12	30-May-12	12-Jun-12	66						
1563	1646-1685 - Construct Barrettes BC16	12	04-Jun-12	16-Jun-12	66						
1564	1646-1685 - Construct Barrettes BC17	12	08-Jun-12	21-Jun-12	66						
2705	1646-1685 - Install Pipe/Sheet Pile Wall	50	09-Jun-12	08-Aug-12	0						
1565	1646-1685 - Construct Barrettes BC18	12	13-Jun-12	27-Jun-12	66						



Leighton Contractors (Asia) Limited Programme Update 19 (Apr 2012) THREE MONTH ROLLING

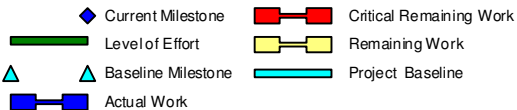
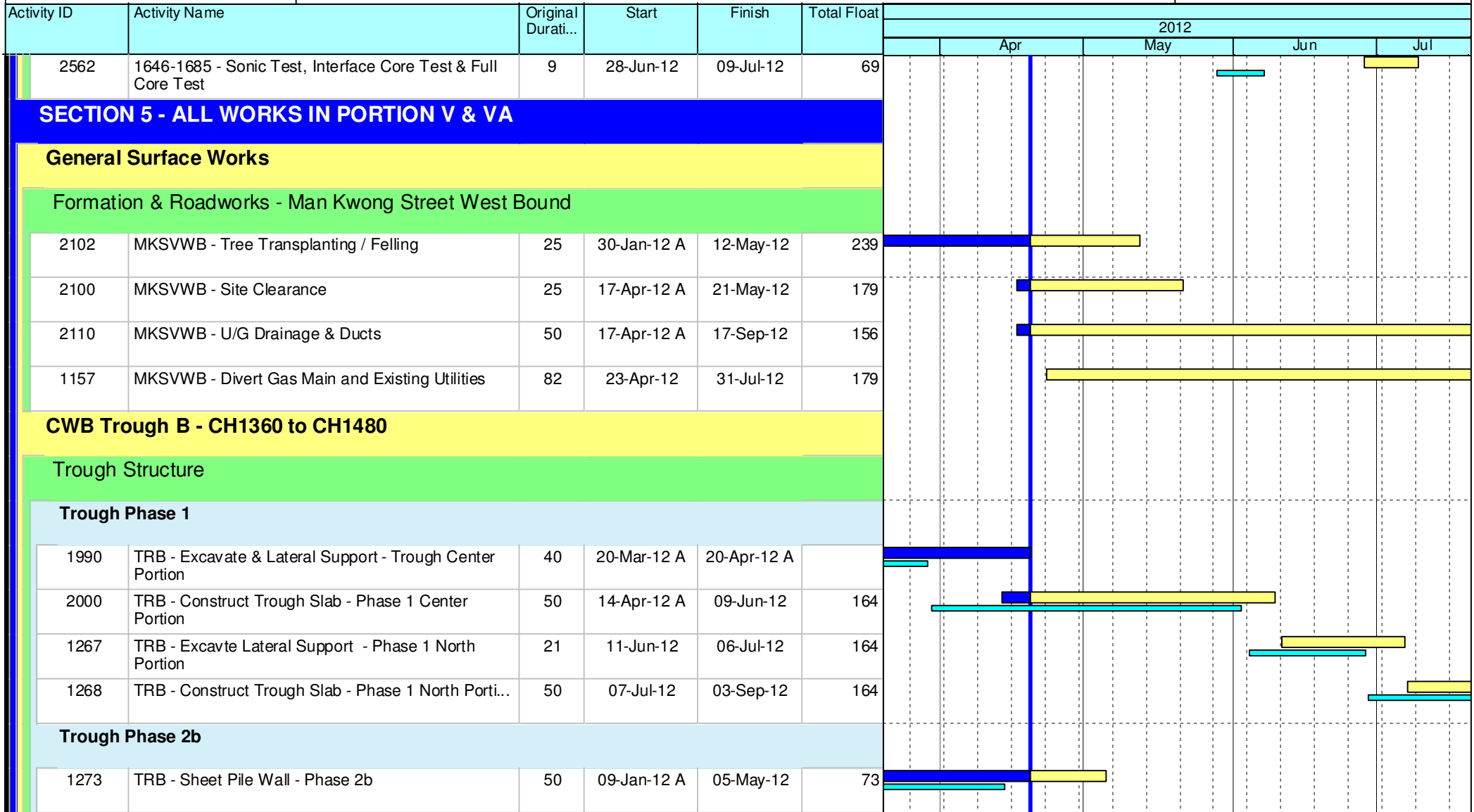
Project ID: U019
 Baseline: DCP3-3
 Layout: Update Three Month Rolling U018
 Page 10 of 12

U019 Programme Update 19 (Apr 2012)			
Date	Revision	Checked	Approv...
21-Apr-12	U019	RC	DS
21-Mar-12	U018	RC	DS

HY/2009/18 Central - Wan Chai Bypass (Central Interchange)



TASK filters: 3 Months, Not HL.



Leighton Contractors (Asia) Limited Programme Update 19 (Apr 2012) THREE MONTH ROLLING

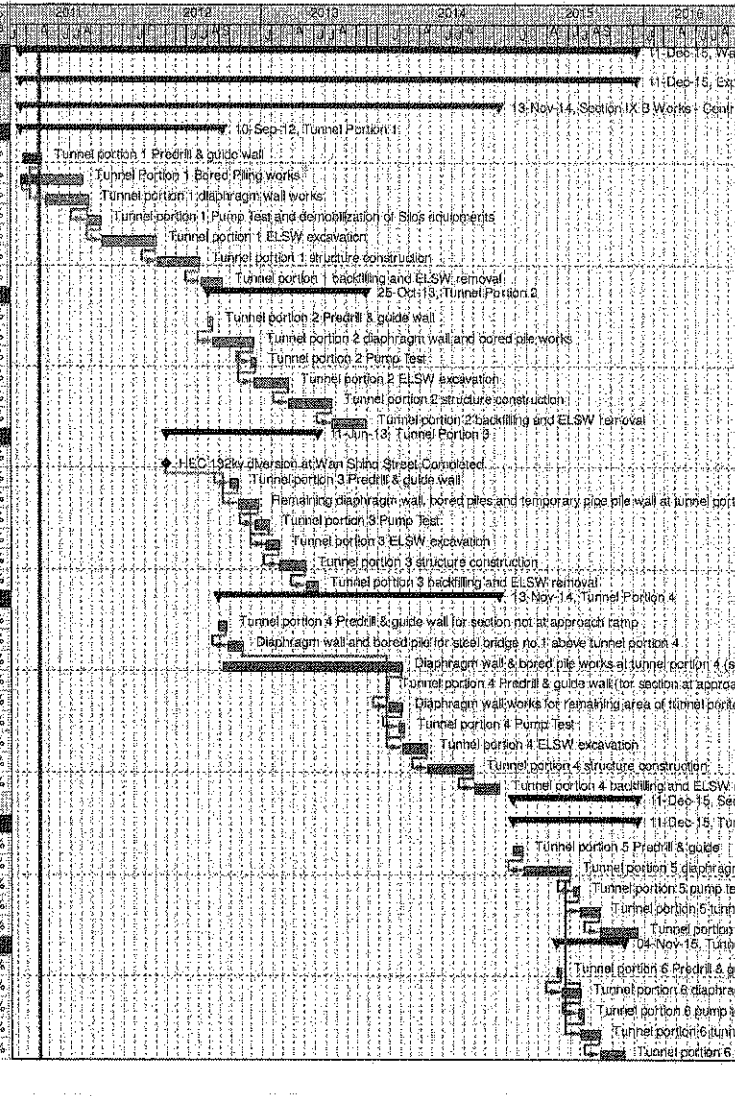
Project ID: U019
 Baseline: DCP3-3
 Layout: Update Three Month Rolling U018
 Page 11 of 12

U019 Programme Update 19 (Apr 2012)			
Date	Revision	Checked	Approv...
21-Apr-12	U019	RC	DS
21-Mar-12	U018	RC	DS

Wan Chai Development Phase II - Central - Wan Chai
Bypass at Wan Chai East CONTRACT HK/2009/02

CHUN WO - CRGL JV

Activity ID	Activity Name	OD	Start	Finish	% Planned	2011	2012	2013	2014	2015	2016
Wan Chai Development Phase II - Central - Wan Chai Bypass at Wan Chai East											
Expanded and More Detailed Initial Works Programme											
Section IX B Works - Central - Wan Chai Bypass Tunnel Structure from chainage 3400 to eastern tunnel											
Tunnel Portion 1											
S9B-T1-0005	Tunnel portion 1 Predrill & guide wall	10	18-Feb-11	13-Apr-11	40%						
S9B-T1-0007	Tunnel Portion 1 Bored Piling works	105	09-Feb-11	08-Aug-11	0%						
S9B-T1-0010	Tunnel portion 1 diaphragm wall works	105	26-Apr-11	27-Aug-11	0%						
S9B-T1-0015	Tunnel portion 1 Pump Test and demobilization of Slos equipments	35	20-Aug-11	30-Sep-11	0%						
S9B-T1-0020	Tunnel portion 1 ELSW excavation	130	03-Oct-11	07-Mar-12	0%						
S9B-T1-0030	Tunnel portion 1 structure construction	100	09-Mar-12	09-Jul-12	0%						
S9B-T1-0040	Tunnel portion 1 backfilling and ELSW removal	54	10-Jul-12	10-Sep-12	0%						
Tunnel Portion 2											
S9B-T2-0105	Tunnel portion 2 Predrill & guide wall	10	02-Aug-12	13-Aug-12	0%						
S9B-T2-0010	Tunnel portion 2 diaphragm wall and bored pile works	100	14-Aug-12	10-Dec-12	0%						
S9B-T2-0015	Tunnel portion 2 Pump Test	14	03-Dec-12	18-Dec-12	0%						
S9B-T2-0020	Tunnel portion 2 ELSW excavation	80	11-Dec-12	19-Mar-13	0%						
S9B-T2-0030	Tunnel portion 2 structure construction	100	20-Mar-13	22-Jul-13	0%						
S9B-T2-0040	Tunnel portion 2 backfilling and ELSW removal	80	23-Jul-13	25-Oct-13	0%						
Tunnel Portion 3											
S9B-T3-0005	HEC 132kv diversion at Wan Shing Street Completed	0	01-Apr-12*		0%						
S9B-T3-0008	Tunnel portion 3 Predrill & guide wall	20	02-Oct-12	25-Oct-12	0%						
S9B-T3-0010	Remaining diaphragm wall, bored piles and temporary pipe pile wall at tunnel portion 3.	50	25-Oct-12	22-Dec-12	0%						
S9B-T3-0015	Tunnel portion 3 Pump Test	30	15-Dec-12	22-Jan-13	0%						
S9B-T3-0020	Tunnel portion 3 ELSW excavation	30	15-Jan-13	20-Feb-13	0%						
S9B-T3-0030	Tunnel portion 3 structure construction	80	21-Feb-13	08-May-13	0%						
S9B-T3-0040	Tunnel portion 3 backfilling and ELSW removal	30	07-May-13	11-Jun-13	0%						
Tunnel Portion 4											
S9B-T4-0005	Tunnel portion 4 Predrill & guide wall for section not at approach ramp	21	30-Aug-12	22-Sep-12	0%						
S9B-T4-0010	Diaphragm wall and bored pile for steel bridge no.1 above tunnel portion 4	40	24-Sep-12	10-Nov-12	0%						
S9B-T4-0020	Diaphragm wall & bored pile works at tunnel portion 4 (section not at approach ramp)	420	11-Sep-12	05-Feb-14	0%						
S9B-T4-0025	Tunnel portion 4 Predrill & guide wall (for section at approach ramp)	5	23-Dec-13	30-Dec-13	0%						
S9B-T4-0030	Diaphragm wall works for remaining area of tunnel portion 4 (for section at approach ramp)	30	31-Dec-13	06-Feb-14	0%						
S9B-T4-0035	Tunnel portion 4 Pump Test	14	28-Jan-14	14-Feb-14	0%						
S9B-T4-0040	Tunnel portion 4 ELSW excavation	60	07-Feb-14	19-Apr-14	0%						
S9B-T4-0050	Tunnel portion 4 structure construction	110	22-Apr-14	01-Sep-14	0%						
S9B-T4-0060	Tunnel portion 4 backfilling and ELSW removal	60	02-Sep-14	13-Nov-14	0%						
Section X Works - Central - Wan Chai Bypass Tunnel Structure from western tunnel to chainage 3400											
Tunnel Portion 5											
S10-T5-0005	Tunnel portion 5 Predrill & guide	21	23-Dec-14	19-Jan-15	0%						
S10-T5-0010	Tunnel portion 5 diaphragm wall & bored pile works	110	20-Jan-15	04-Jun-15	0%						
S10-T5-0015	Tunnel portion 5 pump test	14	13-Jun-15	30-Jun-15	0%						
S10-T5-0020	Tunnel portion 5 tunnel ELSW excavation	45	04-Jul-15	25-Aug-15	0%						
S10-T5-0030	Tunnel portion 5 tunnel structure construction	90	26-Aug-15	11-Dec-15	0%						
Tunnel Portion 6											
S10-T6-0040	Tunnel portion 6 Predrill & guide	12	24-Apr-15	08-May-15	0%						
S10-T6-0050	Tunnel portion 6 diaphragm wall & bored pile works at Area 10	45	09-May-15	09-Jul-15	0%						
S10-T6-0055	Tunnel portion 6 pump test	14	25-Jun-15	11-Jul-15	0%						
S10-T6-0060	Tunnel portion 6 tunnel ELSW excavation at Area 10	45	04-Jul-15	26-Aug-15	0%						
S10-T6-0070	Tunnel portion 6 tunnel structure construction at Area 10	58	26-Aug-15	04-Nov-15	0%						



CEDD CONTRACT NO. HK/2009/02
Wan Chai Development Phase II - Central Wan Chai Bypass at Wan Chai East (Contract 2)
 Revised Programme dated 7 April 2011

Date	Revision	Checked	Approved
07-Apr-11		KT	KY

Page 10 of 11

Activity ID	Activity Name	Rem Dur	Start	Finish	2012																	
					March					April					May				June			
					20	27	05	12	19	26	02	09	16	23	30	07	14	21	28	04	11	18
0410-1020	Utility Coordination and Liaison	48	23-Mar-12	23-May-12	Utility Coordination and Liaison																	
0410-1030	Setting Out and Utility Detection & Protection at Portion XI	18	06-Jun-12	28-Jun-12																		
05 - SECTION 2 & 2A OF THE WORKS																						
05.2 - Cut & Cover Tunnel Ch 4932-5149																						
05.2.1 - D-Wall Construction																						
0521-1710.05	D-wall Panel N106 (6m - 441cu.m)	9	22-Mar-12	31-Mar-12	D-wall Panel N106 (6m - 441cu.m)																	
0521-1710.10	D-wall Panel N105 (4.8m - 354cu.m)	1	07-Mar-12 A	21-Mar-12	D-wall Panel N105 (4.8m - 354cu.m)																	
0521-1710.15	D-wall Panel N104 (3.4m - 257cu.m)	0	18-Feb-12 A	05-Mar-12 A	D-wall Panel N104 (3.4m - 257cu.m)																	
0521-1710.60	D-wall Panel N95 (6m - 492cu.m)	0	03-Feb-12 A	27-Feb-12 A	D-wall Panel N95 (6m - 492cu.m)																	
0521-1750.05	D-wall Panel N94 (6m - 497cu.m)	0	28-Feb-12 A	12-Mar-12 A	D-wall Panel N94 (6m - 497cu.m)																	
0521-1750.10	D-wall Panel N93 (6m - 501cu.m)	7	14-Mar-12 A	28-Mar-12	D-wall Panel N93 (6m - 501cu.m)																	
0521-1750.20	D-wall Panel N91 (6m - 472cu.m)	0	07-Feb-12 A	22-Feb-12 A	D-wall Panel N91 (6m - 472cu.m)																	
0521-1750.50	D-wall Panel N85 (6m - 507cu.m)	0	13-Feb-12 A	29-Feb-12 A	D-wall Panel N85 (6m - 507cu.m)																	
0521-1790.10	D-wall Panel N74 (6m - 562cu.m)	10	16-Apr-12*	26-Apr-12	D-wall Panel N74 (6m - 562cu.m)																	
0521-1790.15	D-wall Panel N75 (6m - 554cu.m)	5	12-Mar-12 A	26-Mar-12	D-wall Panel N75 (6m - 554cu.m)																	
0521-1790.20	D-wall Panel N76 (6m - 585cu.m)	0	23-Feb-12 A	09-Mar-12 A	D-wall Panel N76 (6m - 585cu.m)																	
0521-1795.25	D-wall Panel N80 (6m - 537cu.m)	0	08-Feb-12 A	16-Mar-12 A	D-wall Panel N80 (6m - 537cu.m)																	
0521-1800.20	D-wall N65-N70 Pre-drilling (6 nos. - 1 rig@6d/hole)	36	02-Apr-12*	17-May-12	D-wall N65-N70 Pre-drilling (6 nos. - 1 rig@6d/hole)																	
0521-1810	D-wall N59-N70 Grouting for Existing Seawall Rubble Mound	18	18-May-12	07-Jun-12	D-wall N59-N70																	
0521-1820	D-wall N59-N70 Guide Wall	18	08-Jun-12	29-Jun-12																		
0521-1840	D-wall N52-N58 Pre-drilling (7 nos@6d - 2 rig)	42	18-May-12	07-Jul-12																		
0521-1990.02	D-wall South Panel (02) S103 (6m - 484cu.m)	0	10-Feb-12 A	24-Feb-12 A	D-wall South Panel (02) S103 (6m - 484cu.m)																	
0521-1990.03	D-wall South Panel (03) S109 (6m - 455cu.m)	0	18-Feb-12 A	03-Mar-12 A	D-wall South Panel (03) S109 (6m - 455cu.m)																	
0521-1990.04	D-wall South Panel (04) S97	0	27-Feb-12 A	10-Mar-12 A	D-wall South Panel (04) S97																	
0521-1990.05	D-wall South Panel (05) S102 (5.96m - 483 cu.m)	0	27-Feb-12 A	14-Mar-12 A	D-wall South Panel (05) S102 (5.96m - 483 cu.m)																	
0521-1990.06	D-wall South Panel (06) S104 (6m - 481cu.m)	0	08-Mar-12 A	19-Mar-12 A	D-wall South Panel (06) S104 (6m - 481cu.m)																	
0521-1990.07	D-wall South Panel (07) S96	5	12-Mar-12 A	26-Mar-12	D-wall South Panel (07) S96																	
0521-1990.08	D-wall South Panel (08) S101 (6m 489cu.m)	9	17-Mar-12 A	30-Mar-12	D-wall South Panel (08) S101 (6m 489cu.m)																	
0521-1990.09	D-wall South Panel (10) S111 (7.65m - 575cu.m)	13	20-Mar-12 A	05-Apr-12	D-wall South Panel (10) S111 (7.65m - 575cu.m)																	
0521-1990.10	D-wall South Panel S98	10	31-Mar-12	14-Apr-12	D-wall South Panel S98																	
0521-1990.11	D-wall South Panel S105	10	11-Apr-12	21-Apr-12	D-wall South Panel S105																	
0521-1990.12	D-wall South Panel S100	10	18-Apr-12	28-Apr-12	D-wall South Panel S100																	
0521-1990.13	D-wall South Panel S95	10	25-Apr-12	07-May-12	D-wall South Panel S95																	
0521-1990.14	D-wall South Panel S112	10	03-May-12	14-May-12	D-wall South Panel S112																	
0521-1990.15	D-wall South Panel S106	10	10-May-12	21-May-12	D-wall South Panel S106																	
0521-1990.16	D-wall South Panel S113	10	17-May-12	28-May-12	D-wall South Panel S113																	
0521-1990.17	D-wall South Panel S107	10	24-May-12	04-Jun-12	D-wall South Panel S107																	
0521-1990.18	D-wall South Panel S87	8	19-Mar-12 A	29-Mar-12	D-wall South Panel S87																	
0521-1990.19	D-wall South Panel S91	10	26-Mar-12	07-Apr-12	D-wall South Panel S91																	
0521-1990.20	D-wall South Panel S83	10	02-Apr-12	16-Apr-12	D-wall South Panel S83																	
0521-1990.21	D-wall South Panel S92	10	12-Apr-12	23-Apr-12	D-wall South Panel S92																	
0521-1990.22	D-wall South Panel S86	10	19-Apr-12	30-Apr-12	D-wall South Panel S86																	
0521-1990.23	D-wall South Panel S90	10	26-Apr-12	08-May-12	D-wall South Panel S90																	
0521-1990.24	D-wall South Panel S82	10	04-May-12	15-May-12	D-wall South Panel S82																	

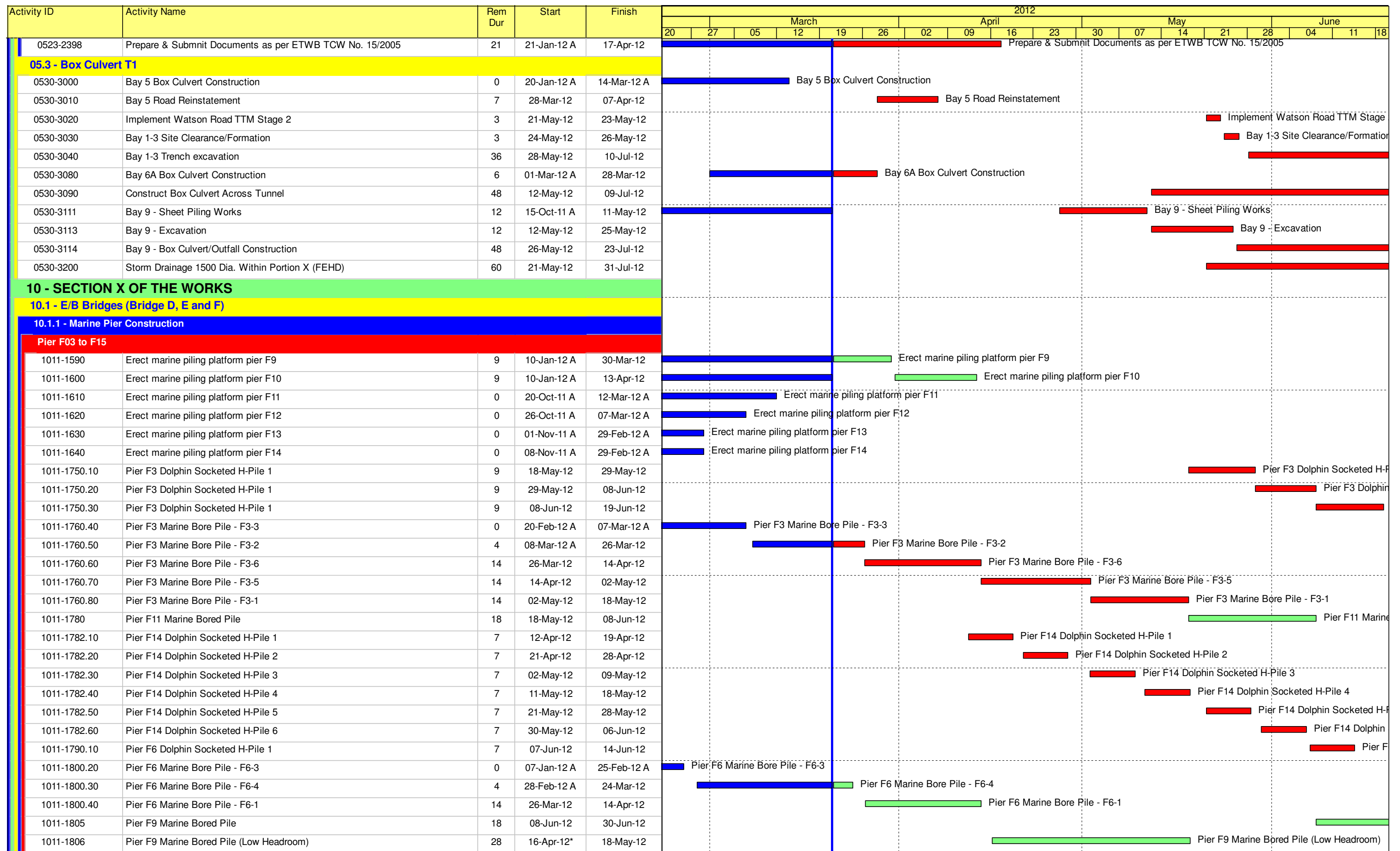
- █ Remaining Level of Effort
- █ Actual Level of Effort
- █ Actual Work
- █ Remaining Work
- █ Critical Remaining Work
- ◆ Milestone

Contract HY/2009/19

Three Month Rolling Programme (21 MAR 2012 to 20 JUN 2012)

3MRP

3MRP - MAR 2012 to JUN 2012



- Remaining Level of Effort
- Actual Level of Effort
- Actual Work
- Remaining Work
- Critical Remaining Work
- ◆ Milestone

Contract HY/2009/19

Three Month Rolling Programme (21 MAR 2012 to 20 JUN 2012)

3MRP

3MRP - MAR 2012 to JUN 2012

Page 5 of 7

Activity ID	Activity Name	Rem Dur	Start	Finish	2012																							
					March						April						May						June					
					20	27	05	12	19	26	02	09	16	23	30	07	14	21	28	04	11	18						
Abutment D12																												
1012-1071	Abutment E/B Bridge Bored Pile D12-1	0	21-Feb-12 A	17-Mar-12 A	Abutment E/B Bridge Bored Pile D12-1																							
1012-1072	Abutment E/B Bridge Bored Pile D12-8	9	17-Mar-12 A	30-Mar-12	Abutment E/B Bridge Bored Pile D12-8																							
1012-1073	Abutment E/B Bridge Bored Pile D12-3	12	31-Mar-12	17-Apr-12	Abutment E/B Bridge Bored Pile D12-3																							
1012-1074	Abutment E/B Bridge Bored Pile D12-4	12	18-Apr-12	02-May-12	Abutment E/B Bridge Bored Pile D12-4																							
1012-1090	Abutment D12 E/B Bridge Bored Pile Testing	18	03-May-12	23-May-12	Abutment D12 E/B Bridge Bored Pile																							
1012-1220	Abutment D12 construction (E/B Bridge)	42	24-May-12	13-Jul-12																								
Pier D08 to D11																												
1012-1015	Pre-drilling for Pilings (D08 to D12) at III (28 no.) (4set)	0	03-Jan-12 A	07-Mar-12 A	Pre-drilling for Pilings (D08 to D12) at III (28 no.) (4set)																							
1012-1020	Portion III Land Pile G.I. Prelim Report / Founding Level	6	21-Mar-12	27-Mar-12	Portion III Land Pile G.I. Prelim Report / Founding Level																							
1012-1025	Portion III Land Pile G.I. Final Report / Founding Level	24	28-Mar-12	27-Apr-12	Portion III Land Pile G.I. Final Report / Founding Level																							
1012-1040.20	Pier D09 Bored Pile D9-2	0	20-Feb-12 A	02-Mar-12 A	Pier D09 Bored Pile D9-2																							
1012-1040.30	Pier D09 Bored Pile D9-1	0	03-Mar-12 A	17-Mar-12 A	Pier D09 Bored Pile D9-1																							
1012-1040.40	Pier D09 Bored Pile D9-4	10	19-Mar-12 A	31-Mar-12	Pier D09 Bored Pile D9-4																							
1012-1040.50	Pier D09 Bored Pile D9-3	12	02-Apr-12	18-Apr-12	Pier D09 Bored Pile D9-3																							
1012-1040.60	Pier D09 Bored Pile D9-6	12	19-Apr-12	03-May-12	Pier D09 Bored Pile D9-6																							
1012-1050.10	Pier D10 Bored Pile D10-2	0	29-Feb-12 A	12-Mar-12 A	Pier D10 Bored Pile D10-2																							
1012-1050.20	Pier D10 Bored Pile D10-5	3	11-Mar-12 A	23-Mar-12	Pier D10 Bored Pile D10-5																							
1012-1050.30	Pier D10 Bored Pile D10-2	12	24-Mar-12	10-Apr-12	Pier D10 Bored Pile D10-2																							
1012-1050.40	Pier D10 Bored Pile D10-5	12	11-Apr-12	24-Apr-12	Pier D10 Bored Pile D10-5																							
1012-1050.50	Pier D10 Bored Pile D10-3	12	25-Apr-12	09-May-12	Pier D10 Bored Pile D10-3																							
1012-1050.60	Pier D10 Bored Pile D10-4	12	10-May-12	23-May-12	Pier D10 Bored Pile D10-4																							
1012-1060.10	Pier D11 Bored Pile D11-5	0	13-Feb-12 A	27-Feb-12 A	Pier D11 Bored Pile D11-5																							
1012-1060.20	Pier D11 Bored Pile D11-2	6	28-Feb-12 A	27-Mar-12	Pier D11 Bored Pile D11-2																							
1012-1060.30	Pier D11 Bored Pile D11-2	12	28-Mar-12	13-Apr-12	Pier D11 Bored Pile D11-2																							
1012-1060.40	Pier D11 Bored Pile D11-1	12	14-Apr-12	27-Apr-12	Pier D11 Bored Pile D11-1																							
1012-1060.50	Pier D11 Bored Pile D11-3	12	28-Apr-12	12-May-12	Pier D11 Bored Pile D11-3																							
1012-1060.60	Pier D11 Bored Pile D11-4	12	14-May-12	26-May-12	Pier D11 Bored Pile D11-4																							
1012-1130	Pier D09 Construct Pile Cap	18	18-May-12	07-Jun-12	Pier D09 Constr																							
1012-1140	Pier D09 Construct Pier/Column	12	08-Jun-12	21-Jun-12																								
1012-1190	Pier D11 Construct Pile Cap	18	11-Jun-12	03-Jul-12																								
Pier D05 to D07																												
1012-1270	Pier D07 Bored Piles (6 piles)	108	04-May-12	08-Sep-12																								
1012-1290.20	Pier D05 Bored Pile D05-1	13	02-Dec-11 A	07-Jun-12	Pier D05 Bored																							
1012-1300	Pier D05/D06/D07 Bored Piles Testing	18	07-Jun-12	29-Jun-12																								
10.1.3 - E/B Bridge Construction																												
Bridge D3																												
1013-1000	Design & Procurement of Launching Girder	68	21-Jan-12 A	12-Jun-12	Design &																							
1013-1010	Fabrication & Delivery of Launching Girder	75	12-Jun-12	10-Sep-12																								

- █ Remaining Level of Effort
- █ Actual Level of Effort
- █ Actual Work
- █ Remaining Work
- █ Critical Remaining Work
- ◆ Milestone

Contract HY/2009/19

Three Month Rolling Programme (21 MAR 2012 to 20 JUN 2012)

3MRP

3MRP - MAR 2012 to JUN 2012

Page 7 of 7